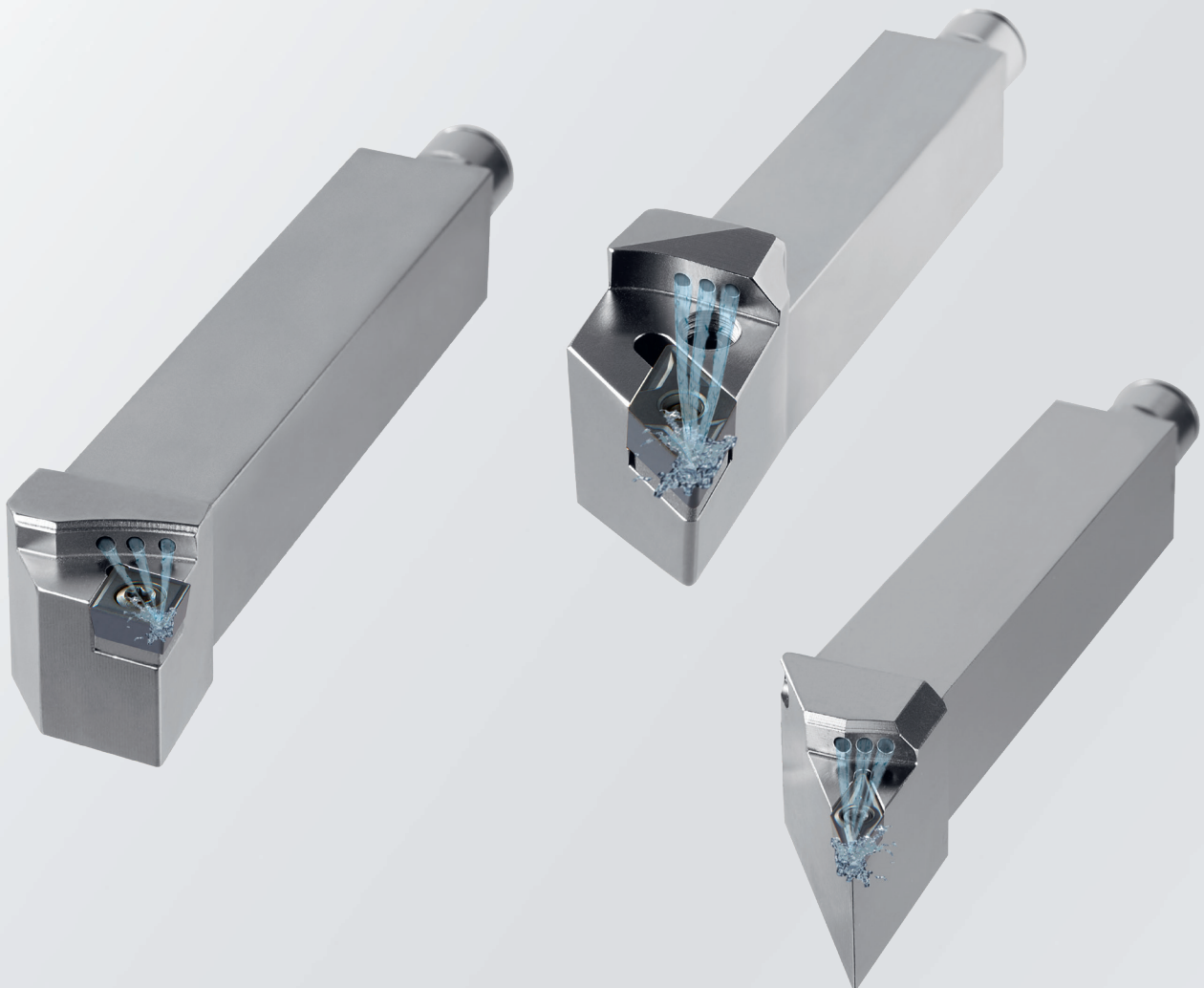
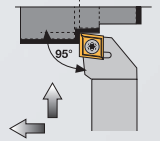
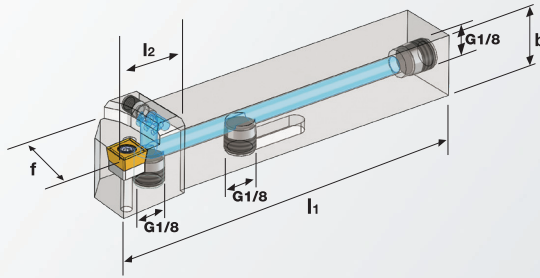
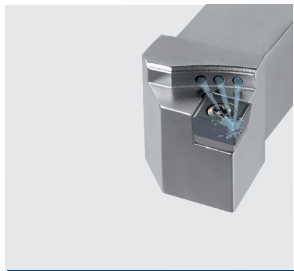


Drehhalter mit Kühlmittelzufuhr auf die Schneide



gültig bis 31.03.2024
Irrtümer vorbehalten
alle Preise zzgl. Fracht & MwSt.

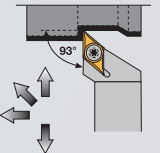
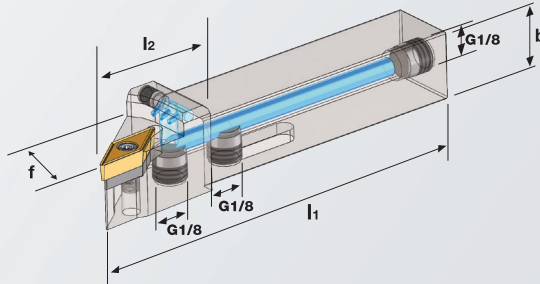
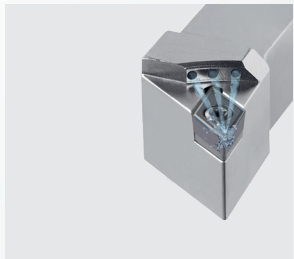
DREHHALTER MIT IK AUF DIE SCHNEIDE TYP ECO



Stahlschaft

SCLCR/L

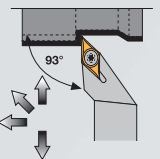
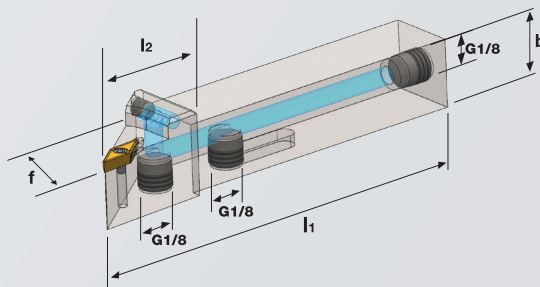
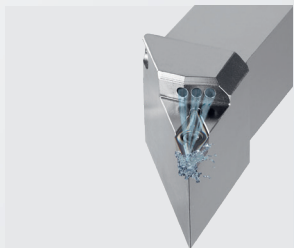
	i (mm)																								
	h1	h2	b	l1	l2	f																			
SCLCR/L 2020 K09 - IK ECO	20	20	20	125	17	25											CCMT CCGT 09T3...	US1111	GBS1111	SS1111	BT15	0,420			104,--
SCLCR/L 2525 M12 - IK ECO	25	25	25	150	20	32											CCMT CCGT 1204...	US1221	GBS1221	SS1221	BT15	0,770			106,--



Stahlschaft

SDJCR/L

	i (mm)																								
	h1	h2	b	l1	l2	f																			
SDJCR/L 2020 K11 - IK ECO	20	20	20	125	24	25											DCMT DCGT 11T3...	US2311	GBS1111	SS1111	BT15	0,408			104,--
SDJCR/L 2525 M11 - IK ECO	25	25	25	150	27	32																0,735			106,--



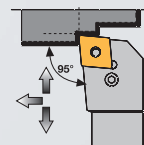
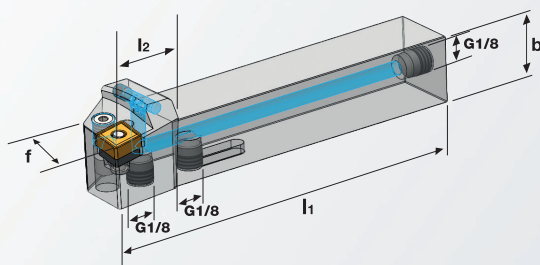
Stahlschaft

SVJCR/L

	i (mm)																								
	h1	h2	b	l1	l2	f																			
SVJCR/L 2020 K11 - IK ECO	20	20	20	125	23	25											VCMT VCGT 1103...	--	--	SS1751	BT08	0,373			104,--
SVJCR/L 2020 K16 - IK ECO	20	20	20	125	29,5	25											VCMT VCGT 1604...	US6522	GBS1111	SS1111	BT15	0,380			104,--
SVJCR/L 2525 M16 - IK ECO	25	25	25	150	32,5	32																0,677			106,--

Lieferung OHNE Stecknippel

DREHHALTER MIT IK AUF DIE SCHNEIDE TYP ECO



Stahlschaft

PCLNR/L

↔ (mm)		h1	h2	b	l1	l2	f												STOCK	€/Stck.
--------	--	----	----	---	----	----	---	--	--	--	--	--	--	--	--	--	--	--	-------	---------

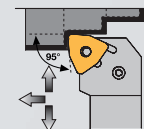
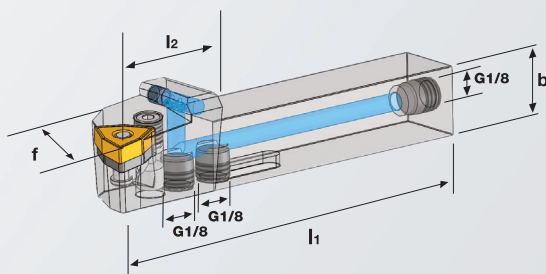
PCLNR/L 2020 K12 - IK ECO 20 20 20 125 27,4 25

CNMG 1204... UP1111 HP1111 SP1111 RP1111 MP1111

0,428 ● 104,--

PCLNR/L 2525 M12 - IK ECO 25 25 25 150 28 32

0,751 ● 106,--



Stahlschaft

PWNLR/L

↔ (mm)		h1	h2	b	l1	l2	f												STOCK	€/Stck.
--------	--	----	----	---	----	----	---	--	--	--	--	--	--	--	--	--	--	--	-------	---------

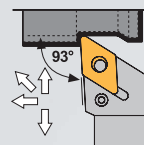
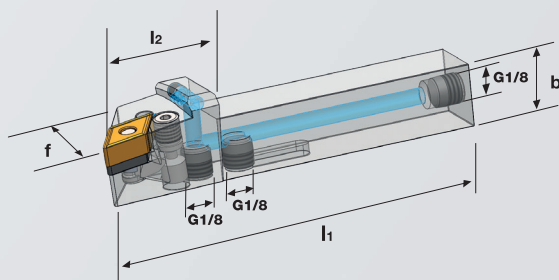
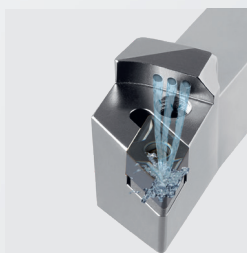
PWNLR/L 2020 K08 - IK ECO 20 20 20 125 25 25

WNMG 0804... UP71011 HP1111 SP1111 RP1111 MP1111

0,420 ● 104,--

PWNLR/L 2525 M08 - IK ECO 25 25 25 150 25 32

0,767 ● 106,--



Stahlschaft

PDJNR/L

↔ (mm)		h1	h2	b	l1	l2	f												STOCK	€/Stck.
--------	--	----	----	---	----	----	---	--	--	--	--	--	--	--	--	--	--	--	-------	---------

PDJNR/L 2020 K15 - IK ECO 20 20 20 125 25 25

DNMG 1506... UP2421 HP2421 SP1111 RP1111 MP1111

0,411 ● 104,--

PDJNR/L 2525 M15 - IK ECO 25 25 25 150 25 32

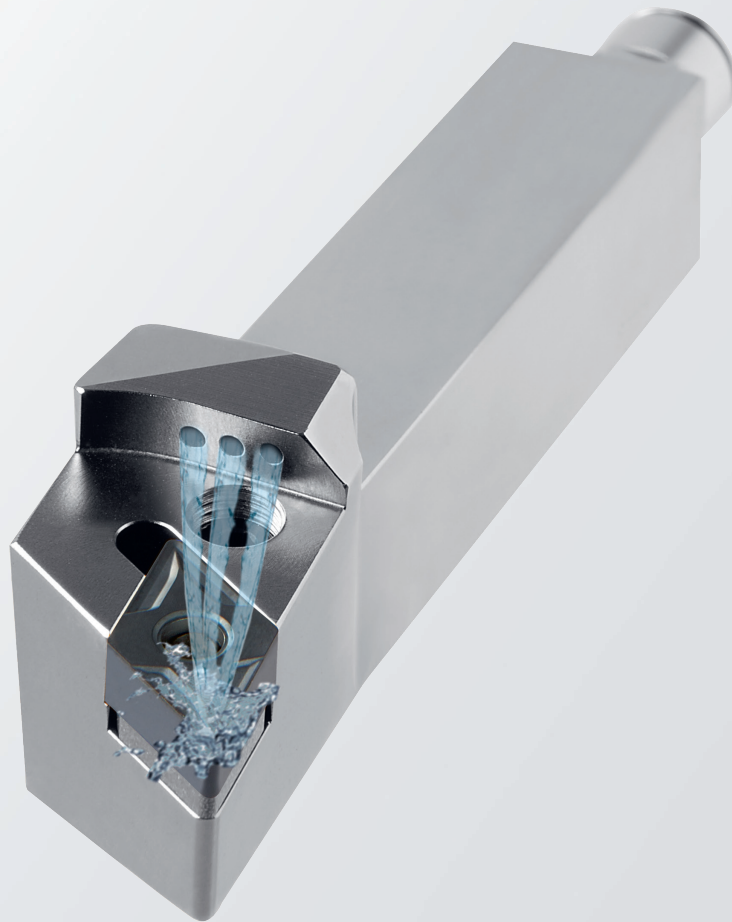
0,737 ● 106,--

Lieferung OHNE Stecknippel



WTN Werkzeug-Technik-Nord GmbH
Emmy-Noether-Strasse 1
24558 Henstedt-Ulzburg
Germany

Tel.: 04193 889178-0
Fax: 04193 889178-88
wtn@wtn-gmbh.de
www.wtn-gmbh.de



WTN Werkzeug-Technik-Nord GmbH
Emmy-Noether-Strasse 1
24558 Henstedt-Ulzburg
Germany

Tel.: 04193 889178-0
Fax: 04193 889178-88
wtn@wtn-gmbh.de
www.wtn-gmbh.de

